



The racist roots of child care laws & policies

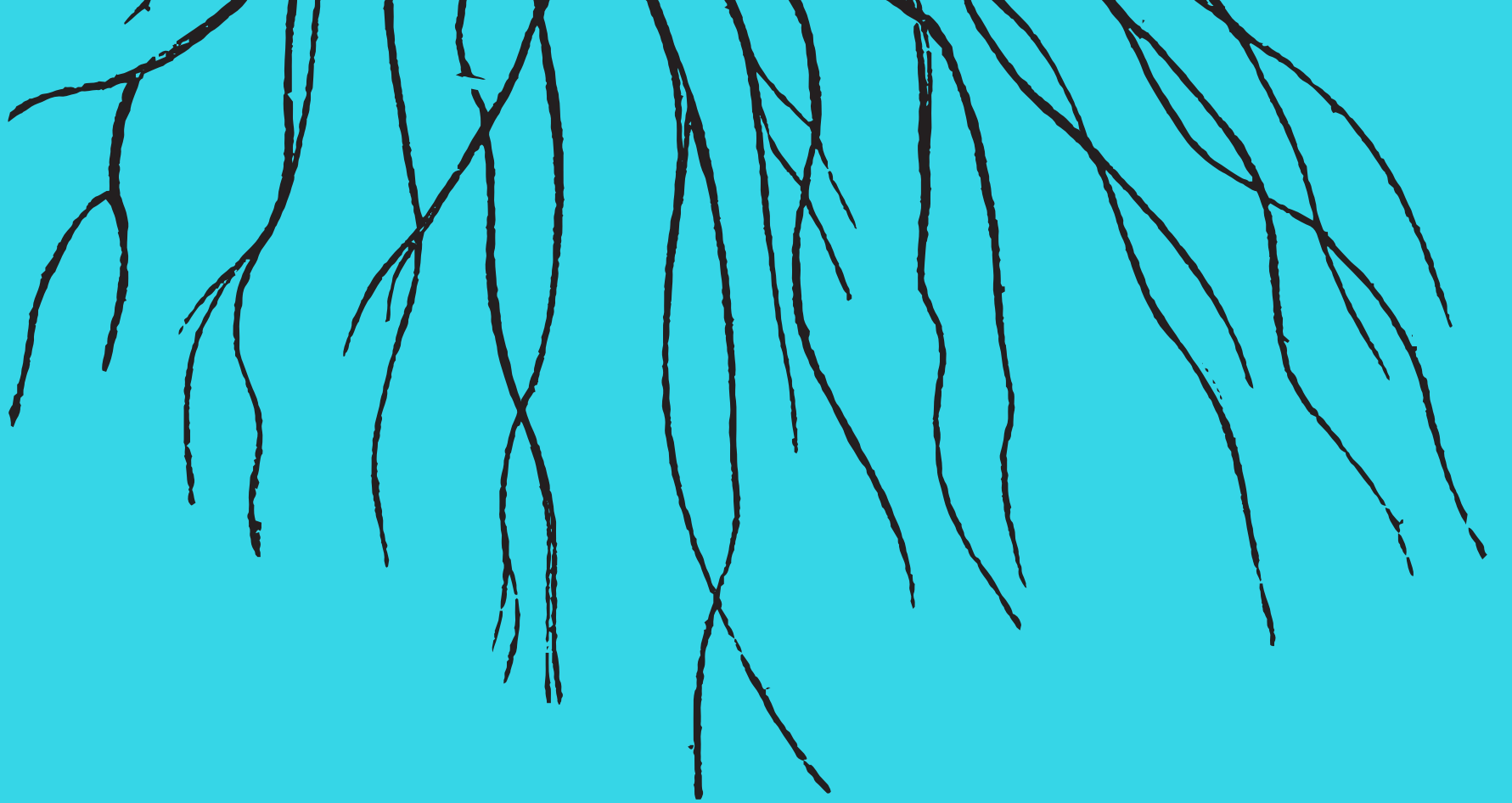


Based on a presentation by Parent Voices California, California Child Care Resource & Referral Network, & Child Care Law Center



**Enslaved Black women are
forced to care for and
breastfeed white children.**

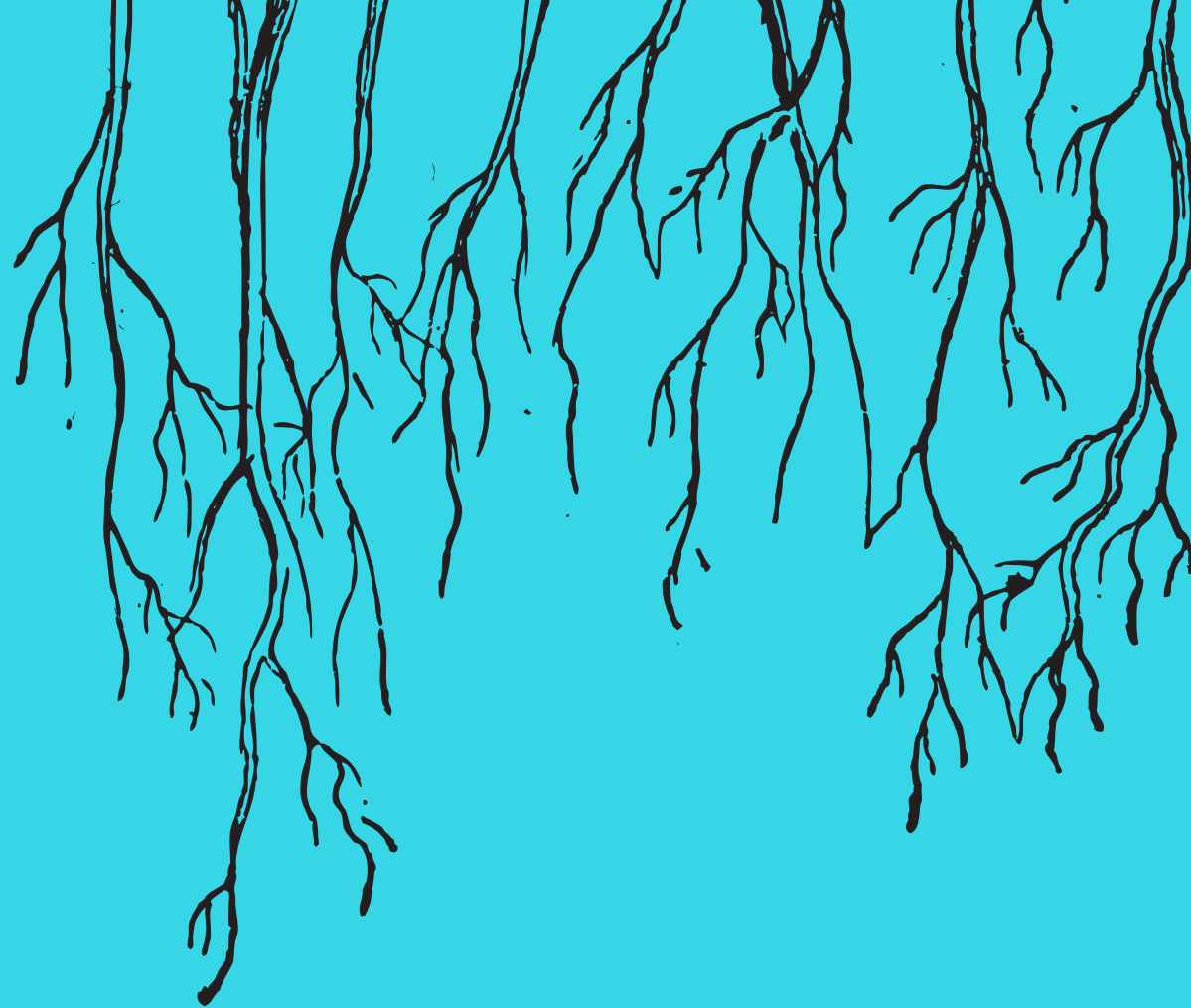




The New Deal

Domestic workers (like child care providers) and farm workers are written out of the Fair Labor Standards Act of 1938 because they are not white, while white “professional” workers gain labor rights.





1950s +

Black women are limited to jobs in domestic work and paid poverty wages by design. White people continue to write and benefit from racist laws that allow them to acquire more wealth.



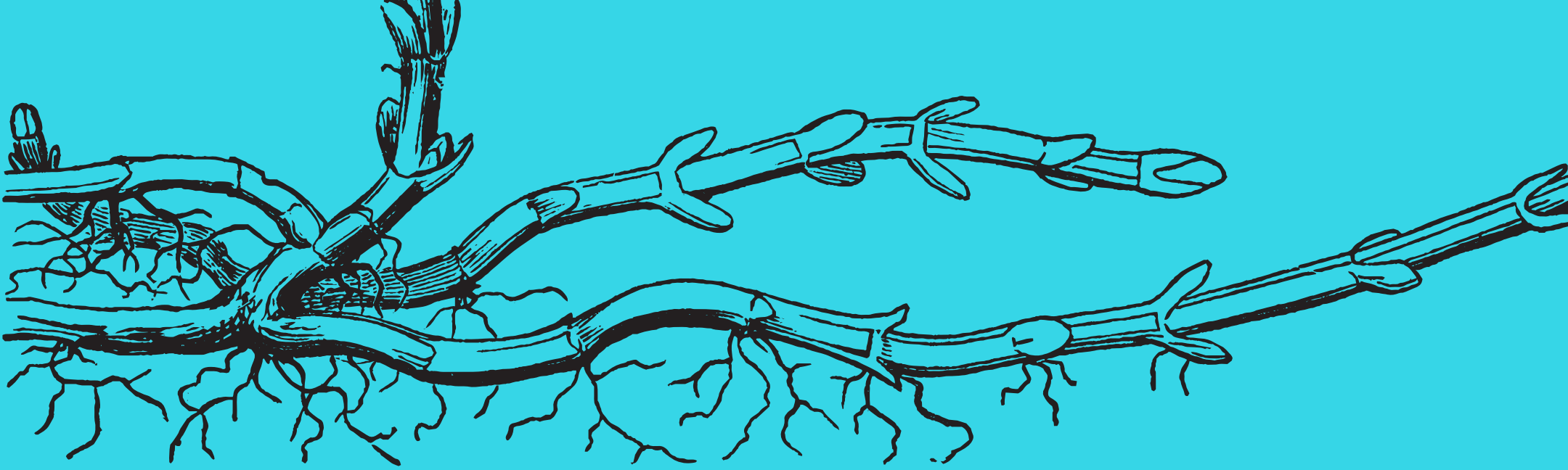


1980s-1990s

Ronald Reagan equates Black women with fraud and laziness using the lie of the 'welfare queen.'

Government programs require families to prove they are 'deserving.'

Meanwhile, the white owning-class benefits from billions in corporate welfare dollars under a 'trickle-down' economy proven not to work.



Today

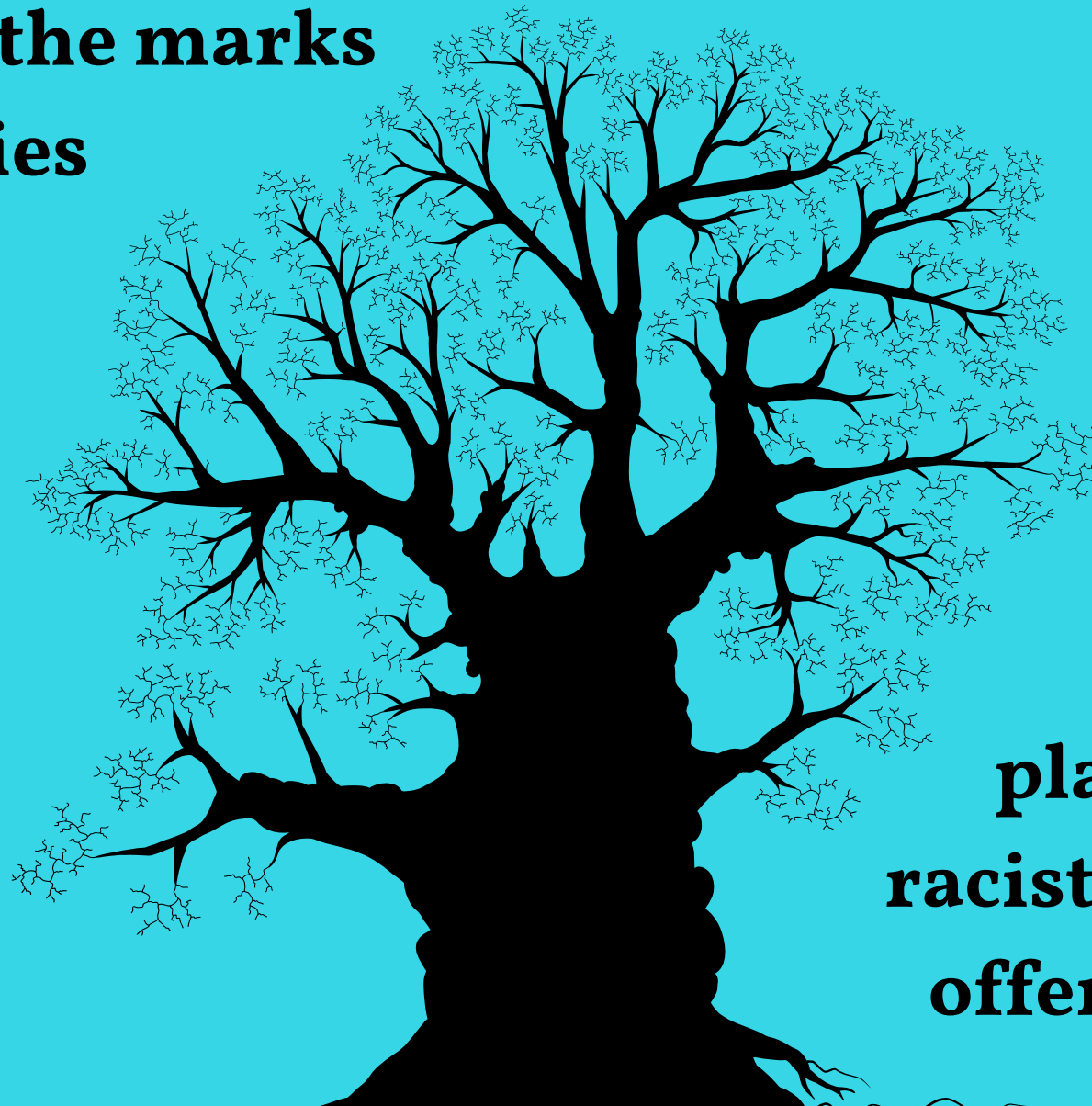
**Half of child care providers
are forced to live at or near
the federal poverty line.**

**State and federal policies
underfund child care, avoid
protections for workers, and
uphold the legacy of racism.**





**Today's child care policies
still bear the marks
of centuries
of racist
laws.**



**No seed
planted in
racist soil can
offer justice.**



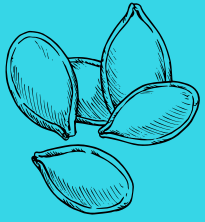
**We are uprooting racist child care policies
and seeding NEW policies for racial equity.**



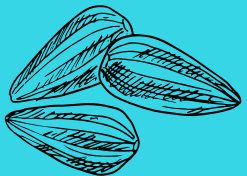
**Folks who have been pushed down
are now leading the way.**

.....

Here's what you can do.



Support movements led by parents, families, and child care providers.



Share your own stories and experiences whenever it feels safe and empowering.



Create policies based on inclusion, not exclusion.

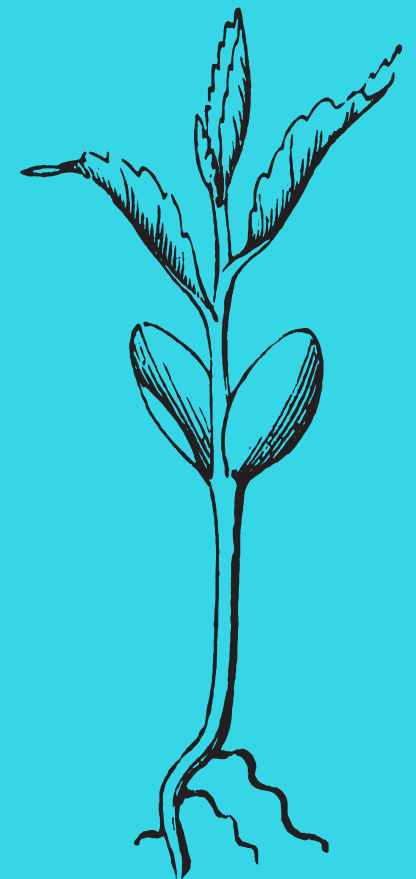


Based on a presentation by

Parent Voices California

California Child Care Resource & Referral Network

Child Care Law Center



An Important Note

Racism is not the only 'ism' at play in biased child care policies. The owning class benefits and keeps power through many forms of inequality.

